

Photo Sensor

Area Sensor

Inductive Proximity Sensor

Capacitive Proximity Sensor

Timer / Counter

Others

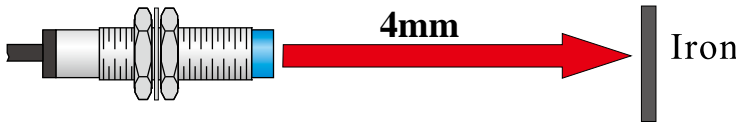
Accessories

◆ **Around Two times longer sensing distance than conventional models.**

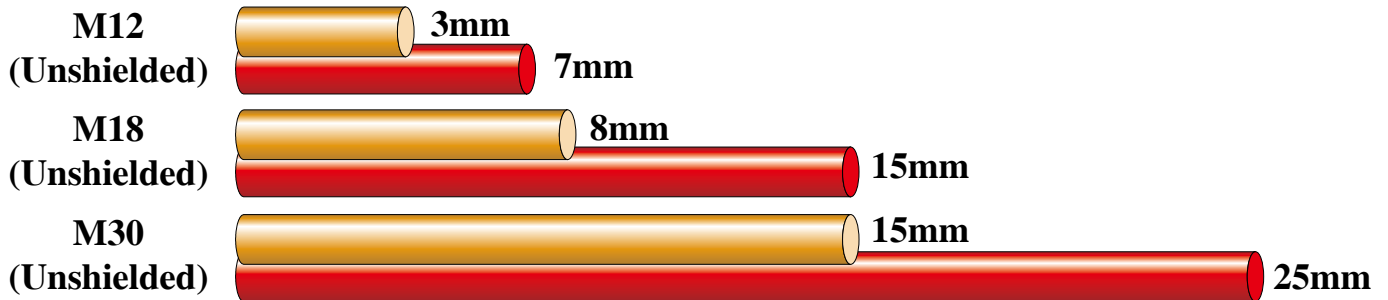
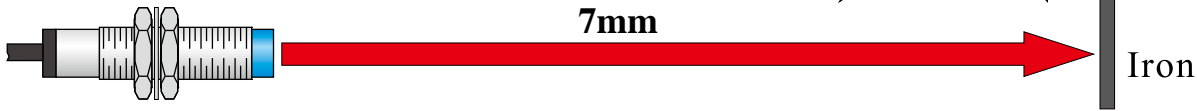
檢測距離接近原有機型的兩倍

TSC series features 180% longer sensing distance than conventional models. It makes the detection more stable. TSC系列比原有的機型檢測距提升了175%，使檢測更加可靠。

SC1204-□(Conventional model)



TSC1207-□(M12 Unshielded)



Longer sensing range

Short circuit protection

Noise immunity

Waterproof

◆ **Short Circuit Protection / Reverse Polarity Protection**

短路保護/極性保護裝置

The TSC series will activate the short circuit protection/reverse polarity protection to reduce the damage caused by the wrong operation. / 當使用者誤接輸出線或極性相反時，將會啟動短路保護/極性保護，以降低因誤接而所造成的損害。

◆ **Waterproof / 防水**

IP66 protection. The sensor can be installed outdoors. It can prevent damage caused by immersion or dip in water under regular standard. / 防水等級為IP66，可裝置在室外，在一定標準下能確保不因浸水而造成損壞。

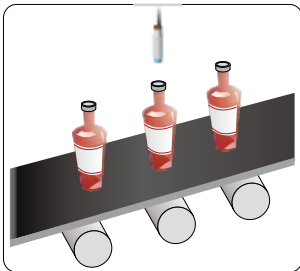
◆ **Operation indicator / 可見工作狀態指示燈**

The entire tail cover is transparent. The light of red LED can be widely observable and the operation situation can be observed very quickly.

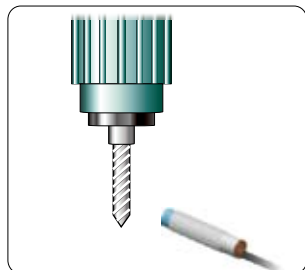
產品的尾部為透明的後殼，可以很清楚的看到LED燈發亮(紅色)，能快速判斷是否為工作狀態。



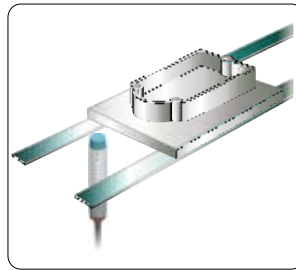
◆ **Applications / 應用例**



To detect the aluminum lid on the bottle.



To detect if the drill is broken.



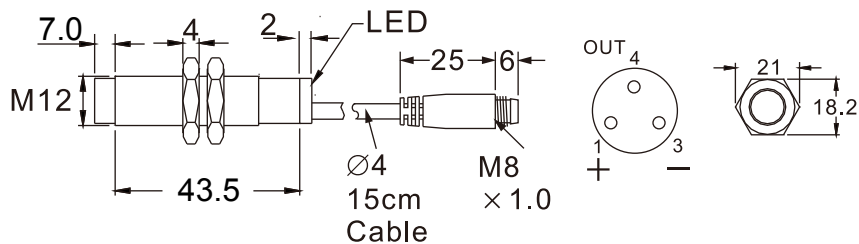
To detect the traveling aluminum pallets.

Long Sensing Range Tubular Inductive Proximity Sensor

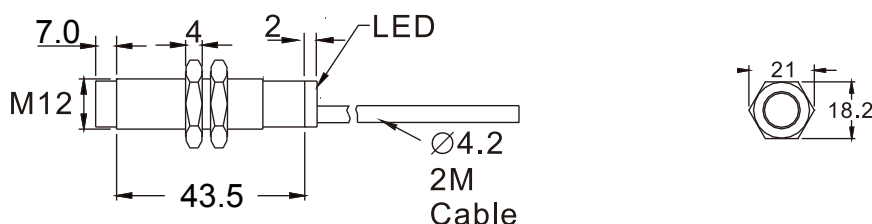
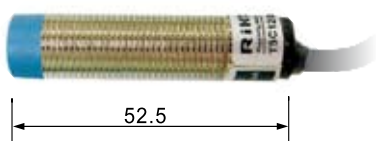
M12

Specifications/規格表：

TSC1207-□D



TSC1207-□



Output method 輸出模式	NPN N.O.	TSC1207-N	TSC1207-ND
	PNP N.O.	TSC1207-P	TSC1207-PD
Sensing type / 檢出方式	Unshielded / 非隔離型		
Description / 外型	Standard / 標準M12		
Standard sensing object / 標準檢測物	Iron 12 x 12 x 1 mm		
Sensing distance / 檢出距離	7 mm		
Secure sensing distance / 建議距離	0 to 5.6 mm		
Hysteresis / 遲滯	≤ 15 % of sensing distance		
Response time / 反應時間	5 ms Max.		
Operating voltage / 工作電壓	DC 12 ~ 24V		
Current consumption / 消耗電流	≤ 8 mA no-load		
Load current / 負載電流	100 mA Max at DC 24V		
Leakage current / 漏電流	≤ 1.1 mA no-load		
Residual voltage / 殘餘電壓	≤ DC 1.5V		
Insulation resistance / 隔離阻抗	20M Ω min. (DC500V)		
Voltage withstandability / 絕緣耐壓	AC1000V 60Hz for 60 Sec.		
Operating temperature / 工作溫度	-5°C ~ + 50°C		
Protection degree / 防水等級	IP 66		
Wiring method / 出線方式	Ø4.2 x 2M / 3-wire	M8 pigtailed type/ M8接頭15cm電線式	
Weight / 重量	Approx. 65g	Approx. 15g	

Photo Sensor

Area Sensor

Inductive Proximity
SensorCapacitive Proximity
Sensor

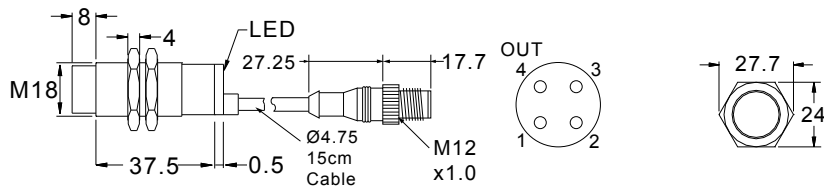
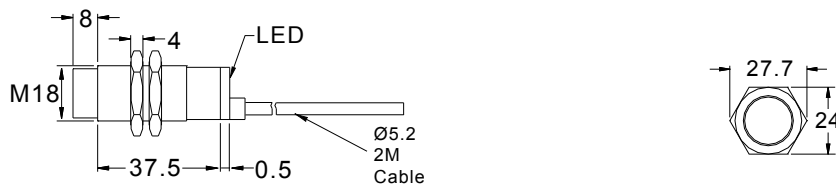
Timer / Counter

Others

Accessories

M18

Long Sensing Range Tubular Inductive Proximity Sensor

Specifications/規格表 :
TSC1815-□K

TSC1815-□


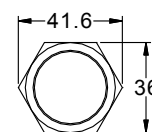
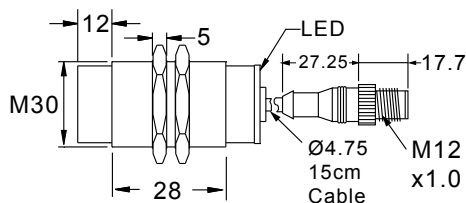
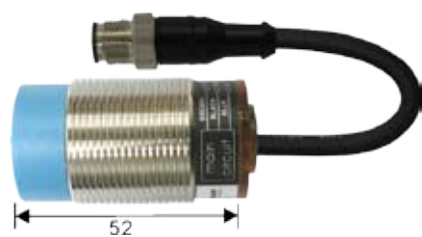
Output method / 輸出模式	NPN N.O.	TSC1815-N	TSC1815-NK
	PNP N.O.	TSC1815-P	TSC1815-PK
Sensing type / 檢出方式	Unshielded / 非隔離型		
Description / 外型	Standard / 標準M18		
Standard sensing object / 標準檢測物	Iron 18 x 18 x 1 mm		
Sensing distance / 檢出距離	15 mm		
Secure sensing distance / 建議距離	0 to 12 mm		
Hysteresis / 遲滯	≤ 15 % of sensing distance		
Response time / 反應時間	3ms Max.		
Operating voltage / 工作電壓	DC 12 ~ 24V		
Current consumption / 消耗電流	≤ 8 mA no-load		
Load current / 負載電流	100 mA Max at DC 24V		
Leakage current / 漏電流	≤ 1.1 mA no-load		
Residual voltage / 殘餘電壓	≤ DC 1.5V		
Insulation resistance / 隔離阻抗	20MΩ min. (DC500V)		
Voltage withstandability / 絕緣耐壓	AC1000V 60Hz for 60 Sec.		
Operating temperature / 工作溫度	-5°C ~ + 50°C		
Protection degree / 防水等級	IP 66		
Wiring method / 出線方式	Ø5.2 x 2M / 3-wire	M12 pigtailed type/ M12接頭15cm電線式	
Weight / 重量	Approx. 90g	Approx. 30g	

Long Sensing Range Tubular Inductive Proximity Sensor

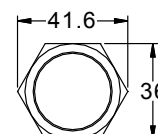
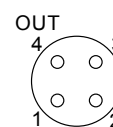
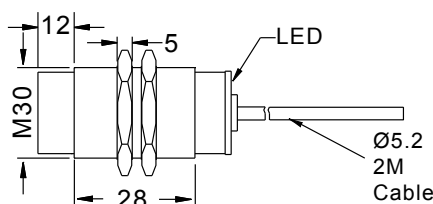
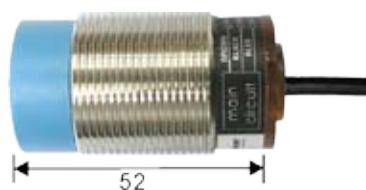
M30

Specifications/規格表：

TSC3025-□K



TSC3025-□



Output method / 輸出模式	NPN N.O.	TSC3025-N	TSC3025-NK
	PNP N.O.	TSC3025-P	TSC3025-PK
Sensing type / 檢出方式	Unshielded / 非隔離型		
Description / 外型	Standard / 標準M30		
Standard sensing object / 標準檢測物	Iron 30 x 30 x 1 mm		
Sensing distance / 檢出距離	25 mm		
Secure sensing distance / 建議距離	0 to 20 mm		
Hysteresis / 遲滯	≤ 15 % of sensing distance		
Response time / 反應時間	5ms Max.		
Operating voltage / 工作電壓	DC 12 ~ 24V		
Current consumption / 消耗電流	≤ 8 mA no-load		
Load current / 負載電流	100 mA Max at DC 24V		
Leakage current / 漏電流	≤ 1.1 mA no-load		
Residual voltage / 殘餘電壓	≤ DC 1.5V		
Insulation resistance / 隔離阻抗	20MΩ min. (DC500V)		
Voltage withstandability / 絕緣耐壓	AC1000V 60Hz for 60 Sec.		
Operating temperature / 工作溫度	-5°C ~ + 50°C		
Protection degree / 防水等級	IP 66		
Wiring method / 出線方式	Ø5.2 x 2M / 3-wire	M12 pigtailed type/ M12接頭15cm電線式	
Weight / 重量	Approx. 135g	Approx. 80g	

Photo Sensor

Area Sensor

Inductive Proximity Sensor

Capacitive Proximity Sensor

Timer / Counter

Others

Accessories