

Piezo-electric accelerometer

A/22



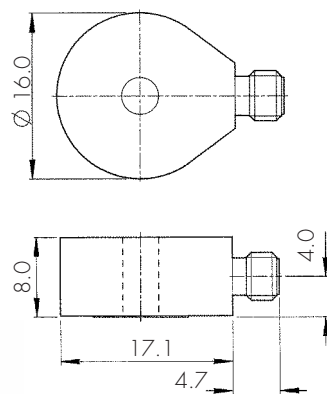
29pC/g nom. • 12gm wt.
250°C max. temp.

The KONIC sensing element of the A/22 incorporates a mechanically isolated central sleeve that also comprises part of the transducer casing, thus providing an annular through hole for attachment.

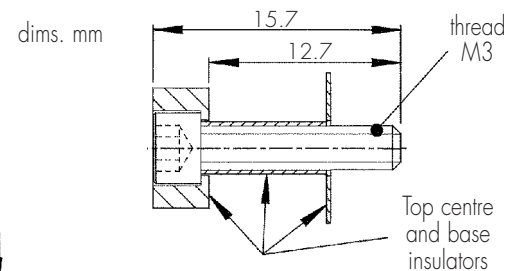
This feature allows 360° connector orientation and minimises height, thus facilitating installation. In addition all welded construction and total absence of epoxies maximises reliability, temperature range.

The A/22 provides an output comparable to that of the A/20, with the advantage of 50% reduced height and total freedom of cable orientation.

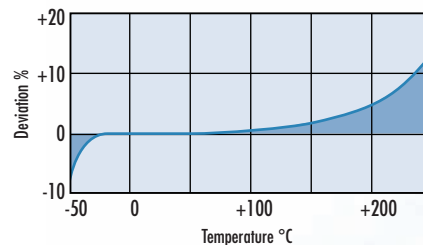
A/22



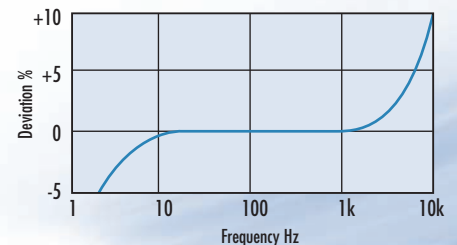
SI/22



TEMPERATURE RESPONSE



FREQUENCY RESPONSE



CONVERSION MODE	KONIC
Charge sensitivity pC/g	23/36
Capacitance pF	1300/1900
Resonant frequency kHz	20
Cross axis error % max	5
Temperature range °C	-50/+250
Charge sensitivity deviation re 20°C	-5% @ -50°C +15% @ +250°C
Pyro-electric output, g/°C	0.2
Pyro-electric corner freq. Hz	0.002
Base strain sens. g/μ strain	0.01
Max continuous accn. g sine	1000
Case material	s/steel 303 S31
Mounting	through hole, 3.5mm dia.
Mounting torque Nm	1
Weight gm	12
Connector	Microdot skt. 10/32 UNF thd.
Case seal	welded

options

- > close tolerance output, wideband temperature calibration 50/+250°C
- > hermetic connector not available
- > Insulated mounting kit SI/22 provides electrical isolation, hence minimising common mode interference