

# PXIS-2508/2558T

## 3U 8-Slot Smart PXI Chassis with 350 W AC Power Supply



### Introduction

The ADLINK PXIS-2508 and PXIS-2558T are new-generation PXI chassis equipped with advanced features and functionalities. Compliant with PXI and CompactPCI specifications, these chassis offer one system slot and seven peripheral slots for more versatile test and measurement computing. Set in a sleek and lightweight chassis for superior portability, the PXIS-2508 and PXIS-2558T also boast of wider operating temperature range, lower operating noise, and robust system build.

Both PXIS-2508 and PXIS-2558T are equipped with an intelligent control board that dynamically monitors and manages the chassis status including the fan speed, system voltages, and internal temperature. A standard RS-232 monitoring port makes remote management possible as chassis status are exported to and viewed from a remote computer using serial communications.

The PXIS-2558T model includes an integrated 8.4" LCD that supports 800 x 600 resolution and touch panel capability. The integrated display allows you to carry the PXI-based testing equipment anytime and anywhere.

Equipped with an industrial grade 350 W AC power supply, the PXIS-2508 and PXIS-2558T also come with front panel LED indicators, and easy-access PXI slots with card guides for convenient installation and deployment. With innovative features and design, PXIS-2508 and PXIS-2558T are your best choices of PXI platform for test and measurement applications.

#### ■ Notice:

The PXIS-2558T implements rear I/O. PXI chassis with rear I/O are designed to provide internal or external chassis I/O using a rear transition module that matches the PXI controller.

#### ■ Warning:

If the PXIS-2558T is used with a controller that does not match the rear transition module, the rear I/O functionality may not operate and may cause damage to the PXI controller or the rear transition module.

### Features

- Compliant with PXI Specification Rev. 2.2
- Compact 8-slot PXI chassis with one system slot and seven PXI/CompactPCI peripheral slots
- 0°C to 55°C extended operating temperature range
- 41.6 dBA silent operation
- Intelligent chassis management
  - Automatic fan speed control
  - Chassis status monitoring and exporting
  - Remote chassis power on/off control
- 5.9 kg lightweight aluminum-metal construction
- 8.4" built-in LCD with touch panel function (PXIS-2558T only)
- Two USB ports on front panel (PXIS-2558T only)
- 350 W industrial-grade AC power supply
- Power, temperature, and fan monitoring LEDs



PXIS-2508 Front View



PXIS-2558T Back View

### Highlights

#### ■ Integrated 8.4" LCD with touch panel (PXIS-2558T only)

The PXIS-2558T has a built-in 8.4" LCD display with touch panel functionality and supports an 800 x 600 resolution. The integrated display transforms the chassis into a stand-alone system that is suitable for bench-top and portable applications.



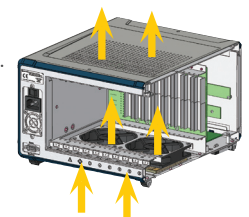
#### ■ Intelligent Chassis Management

The PXIS-2508 and PXIS-2558T has a built-in control board that monitors and manages the chassis status, including the internal temperature, fan speed, and DC voltages. Using the RS-232 monitoring port, these chassis statuses may be exported to another computer for remote monitoring. The control board also allows remote system power on/off and fan speed control as it is capable of accepting commands from the remote computer.



#### ■ Extended Operating Temperature Range

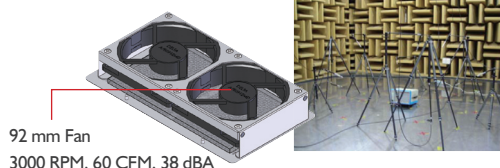
With two 60 CFM fans and efficient direct convection design, the PXIS-2508 and PXIS-2558T can effectively operate within an extended temperature range of 0°C to 55°C. Chamber test shows that the chassis maintained thermal stability even when subjected to an extremely heavy load and installed at high ambient temperature.



1	Software & Utilities
2	DAQ
3	PXI
4	Modular Instruments
5	GPIO & Bus Expansion
6	PAC
7	Motion
8	Real-time Distributed I/O
9	Remote I/O
10	Communications
11	Vision
12	Fanless I/O Platforms
13	cPCI & Industrial Computers
14	Accessories

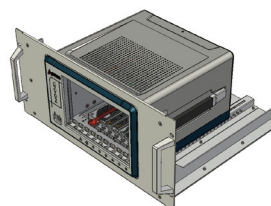
**Silent Operation**

Because chassis fans are major sources of operating noise, the PXIS-2508/2558T fan speed is automatically controlled according to the current internal temperature. This enables the chassis to operate at an ultra-silent 41.6 dBA at room temperature.



**Flexible Rack-mount Design**

ADLINK also provides an optional rack-mount kit to allow flexible installation of the PXIS-2508/2558T in a rack. By adjusting the position of chassis on the rack-mount kit, the PXIS-2508/2558T can be recessed in a cabinet rack up to 10 centimeters to accommodate external mechanical parts on the front side, such as complicated connectors/wires and mass interconnect modules.



**Specifications**

**Power Supply**

- AC Input
  - Input voltage range: 100 to 240 VAC
  - Input voltage frequency: 50 to 60 Hz
  - Input current rating: 8 A/115 VAC or 4 A/230 VAC
- DC Output
  - Total DC power output 350 W

VDC	Minimum	Maximum	Load Regulation	Maximum Ripple & Noise
+5 V	3.0 A	35.0 A	±5%	50 mV
+12 V	2.0 A	18.0 A	±5%	120 mV
+3.3 V	1.0 A	20.0 A	±5%	50 mV
-12 V	0.1 A	2.0 A	±5%	120 mV

**Integrated Devices (PXIS-2558T only)**

- Display: 8.4" TFT LCD, 800 x 600 resolution
- Input device: Built-in touch panel

**Cooling**

- Fans: 2 x 60 CFM fans with filters
- Per-slot cooling capacity: 25 W (verified by 55°C chamber test)

**Acoustic Emission**

- Sound Pressure Level (dBA)

Minimal fan speed	41.6 dBA
Maximal fan speed	47.3 dBA

The combined output power of +5 V and +3.3 V cannot exceed 35 A.

- Sound Power (dBA)

Minimal fan speed	51.9 dBA
Maximal fan speed	55.5 dBA

Tested in accordance with ISO 7779:1999/Amd. 1:2003(E)

**Physical**

- Number of PXI slots: 8 (1 system slot + 7 peripheral slots)
- Dimensions:
  - 280 mm x 177 mm x 303 mm (W x H x D)
- Weight:
  - PXIS-2508: 5.9 kg (13 lbs)
  - PXIS-2558T: 6.4 kg (14 lbs)

**Operating Environment**

- Ambient temperature: 0°C to 55°C
- Relative humidity: 10% to 90%, non-condensing

**Storage Environment**

- Ambient temperature:
  - PXIS-2508: -20°C to 70°C
  - PXIS-2558T: 0°C to 70°C
- Relative humidity: 10% to 90%, non-condensing

**Shock and Vibration**

- Functional shock: 30 G, half-sine, 11 ms pulse duration
- Random vibration:
  - Operating: 5 to 500 Hz, 0.5 GRMS, 3 axes
  - Non-operating: 5 to 500 Hz, 2.46 GRMS, 3 axes

**Emissions Compliance**

- EN 61326-1
- FCC Class A

**CE Compliance**

- Safety: EN 61010-1
- Immunity: EN 61326-1

**Recommended System Controller**

	PXIS-2508	PXIS-2558T-B
PXI-3900 series	√	√

**Ordering Information**

- PXIS-2508**  
3U 8-Slot Smart PXI Chassis with 350 W AC Power Supply
- PXIS-2558T-B**  
3U 8-Slot Smart PXI Chassis with 8.4" LCD Touch Panel for PXI-3900 Series Controllers
- PXIS-25x8 Rack-mount kit**  
Rack-mount Kit for PXIS-2508/2558T