

LM12JC5M2 LM16JC5M2 LM25JC5M2 LM35JC5M2

LM12JC5M2 LM16JC5M2 LM25JC5M2 LM35JC5M2

JC5M2 Series

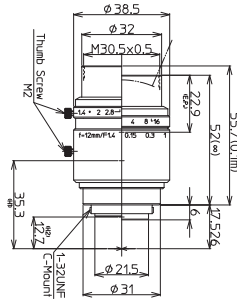
Kowa's JC5M2 lens series is perfect for high-end applications that require the use of 5 megapixel camera.

Features of JC5M2 Series

- ▶ Incorporating Kowa's floating mechanism system, the JC5M2 lens series greatly reduces chromatic aberration from close distance to infinity.
- ▶ With a fast F-stop, locking screws, and a compact design, these lenses provide a good value between price versus performance.



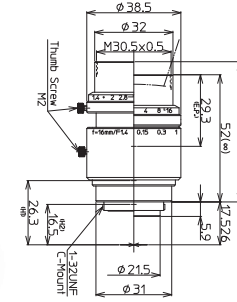
LM12JC5M2



Model	LM12JC5M2
Focal Length(mm)	12.5
Image Size(mm)	8.8×6.6(Φ11)
Iris Range(F-stop)	F1.4-F16
Focusing Range(m)	0.1-∞
Control	Iris Manual Focus Manual
Shooting Range at M.O.D.(mm)	81.4(H)×60.9(V)
Angle of	2/3 Inch 38.4×29.2
View	1/1.8 Inch 31.7×24.0
(Degrees)	1/2 Inch 28.4×21.4
Resolution(Center, Corner)	160lp/mm, 125lp/mm
TV Distortion(%)	-0.6
Back Focus in Air(mm)	11.5
Mount	C-mount
Filter Thread(mm)	M30.5×P0.5
Size(mm)	Φ38.5×52
Weight(g)	130
Temperature Range	-10°C→+50°C

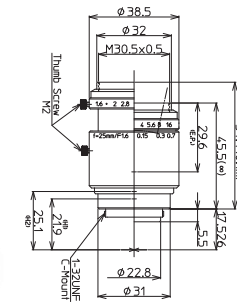
2/3" 1/1.8" 1/2" 12.5mm FIXED 5MEGA C-mnt METAL LO-DIS FLOAT

LM16JC5M2



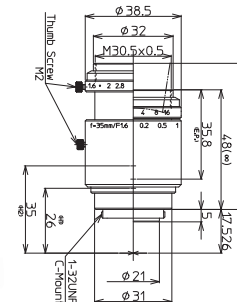
2/3" 1/1.8" 1/2" 16mm FIXED 5MEGA C-mnt METAL LO-DIS FLOAT

LM25JC5M2



2/3" 1/1.8" 1/2" 25mm FIXED 5MEGA C-mnt METAL LO-DIS FLOAT

LM35JC5M2



2/3" 1/1.8" 1/2" 35mm FIXED 5MEGA C-mnt METAL LO-DIS FLOAT

Model	LM16JC5M2
Focal Length(mm)	16
Image Size(mm)	8.8×6.6(Φ11)
Iris Range(F-stop)	F1.4-F16
Focusing Range(m)	0.1-∞
Control	Iris Manual Focus Manual
Shooting Range at M.O.D.(mm)	64.6(H)×48.4(V)
Angle of	2/3 Inch 29.9×22.7
View	1/1.8 Inch 24.7×18.6
(Degrees)	1/2 Inch 22.0×16.6
Resolution(Center, Corner)	160lp/mm, 125lp/mm
TV Distortion(%)	0.03
Back Focus in Air(mm)	11.6
Mount	C-mount
Filter Thread(mm)	M30.5×P0.5
Size(mm)	Φ38.5×52
Weight(g)	125
Temperature Range	-10°C→+50°C

Model	LM25JC5M2
Focal Length(mm)	25
Image Size(mm)	8.8×6.6(Φ11)
Iris Range(F-stop)	F1.6-F16
Focusing Range(m)	0.1-∞
Control	Iris Manual Focus Manual
Shooting Range at M.O.D.(mm)	35.1(H)×26.3(V)
Angle of	2/3 Inch 19.9×15.0
View	1/1.8 Inch 16.4×12.3
(Degrees)	1/2 Inch 14.6×10.9
Resolution(Center, Corner)	160lp/mm, 125lp/mm
TV Distortion(%)	-0.1
Back Focus in Air(mm)	11.2
Mount	C-mount
Filter Thread(mm)	M30.5×P0.5
Size(mm)	Φ38.5×45.5
Weight(g)	115
Temperature Range	-10°C→+50°C

Model	LM35JC5M2
Focal Length(mm)	35
Image Size(mm)	8.8×6.6(Φ11)
Iris Range(F-stop)	F1.6-F16
Focusing Range(m)	0.18-∞
Control	Iris Manual Focus Manual
Shooting Range at M.O.D.(mm)	42.1(H)×31.6(V)
Angle of	2/3 Inch 14.3×10.8
View	1/1.8 Inch 11.7×8.8
(Degrees)	1/2 Inch 10.4×7.8
Resolution(Center, Corner)	160lp/mm, 125lp/mm
TV Distortion(%)	-0.03
Back Focus in Air(mm)	12.2
Mount	C-mount
Filter Thread(mm)	M30.5×P0.5
Size(mm)	Φ38.5×48
Weight(g)	120
Temperature Range	-10°C→+50°C

Diagram of M.O.D. / Magnification Using A Close Up Ring

Model	LM12JC5M2	LM16JC5M2	LM25JC5M2	LM35JC5M2
(Non)M.O.D./Magnification	100mm/0.109×	100mm/0.137×	100mm/0.251×	180mm/0.209×
(1mm Ring)M.O.D./Magnification	50mm/0.184×	62mm/0.195×	86mm/0.288×	160mm/0.235×
(5mm Ring)M.O.D./Magnification	-	-	54mm/0.434×	109mm/0.341×
(10mm Ring)M.O.D./Magnification	-	-	-	78mm/0.470×
(20mm Ring)M.O.D./Magnification	-	-	-	49mm/0.728×

† Images may differ from the actual product.

† Images may differ from the actual product.